



Cadherin-26 Polyclonal Antibody

Catalog No	YP-Ab-16934
Isotype	IgG
Reactivity	Human;Rat;Mouse;
Applications	WB;IF;ELISA
Gene Name	CDH26
Protein Name	Cadherin-like protein 26
Immunogen	The antiserum was produced against synthesized peptide derived from human CDH26. AA range:11-60
Specificity	Cadherin-26 Polyclonal Antibody detects endogenous levels of Cadherin-26 protein.
Formulation	Liquid in PBS containing 50% glycerol, 0.5% BSA and 0.02% sodium azide.
Source	Polyclonal, Rabbit,IgG
Purification	The antibody was affinity-purified from rabbit antiserum by affinity-chromatography using epitope-specific immunogen.
Dilution	Western Blot: 1/500 - 1/2000. Immunofluorescence: 1/200 - 1/1000. ELISA: 1/10000. Not yet tested in other applications.
Concentration	1 mg/ml
Purity	≥90%
Storage Stability	-20°C/1 year
Synonyms	CDH26; Cadherin-like protein 26; Cadherin-like protein VR20
Observed Band	95kD
Cell Pathway	Cell membrane ; Single-pass type I membrane protein .
Tissue Specificity	Expressed by epithelial cells of gastrointestinal tissue.
Function	function:Cadherins are calcium dependent cell adhesion proteins. They preferentially interact with themselves in a homophilic manner in connecting cells; cadherins may thus contribute to the sorting of heterogeneous cell types.,similarity:Contains 4 cadherin domains.,
Background	Cadherins are a family of adhesion molecules that mediate Ca ²⁺ -dependent cell-cell adhesion in all solid tissues and modulate a wide variety of processes, including cell polarization and migration. Cadherin domains occur as repeats in the extracellular region and are thought to contribute to the sorting of heterogeneous cell types and the maintenance of orderly structures such as epithelium. This gene encodes a cadherin domain-containing protein whose specific function has not yet been determined. Alternative splicing occurs at this locus and two transcript variants, encoding distinct proteins, have been identified. [provided by RefSeq, Jul 2008],

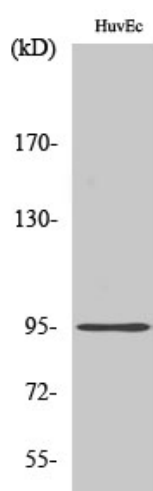
**matters needing attention**

Avoid repeated freezing and thawing!

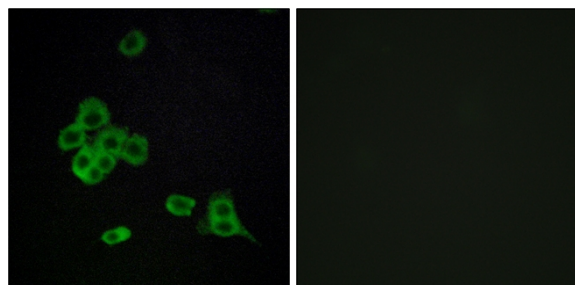
Usage suggestions

This product can be used in immunological reaction related experiments. For more information, please consult technical personnel.

Products Images



Western Blot analysis of various cells using Cadherin-26 Polyclonal Antibody



Immunofluorescence analysis of MCF7 cells, using CDH26 Antibody. The picture on the right is blocked with the synthesized peptide.